



MONTHLY MEMBERSHIP PROGRESS REPORT

District 2 E2

Results as of: 06/30/2018

GMT: JOE AL PICONE

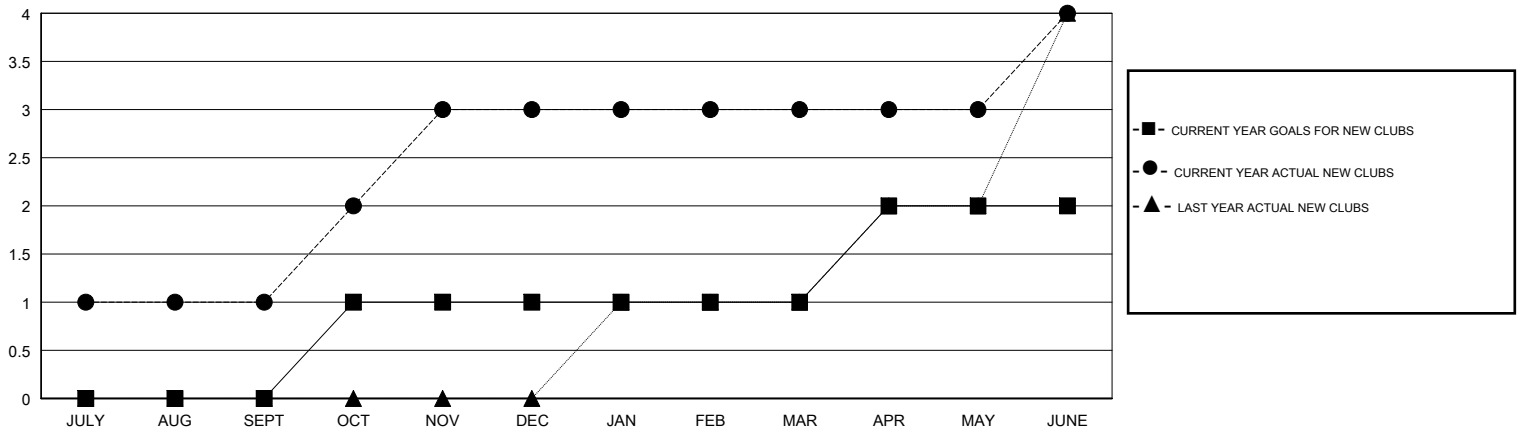
LOCATION TEXAS

GMT CA

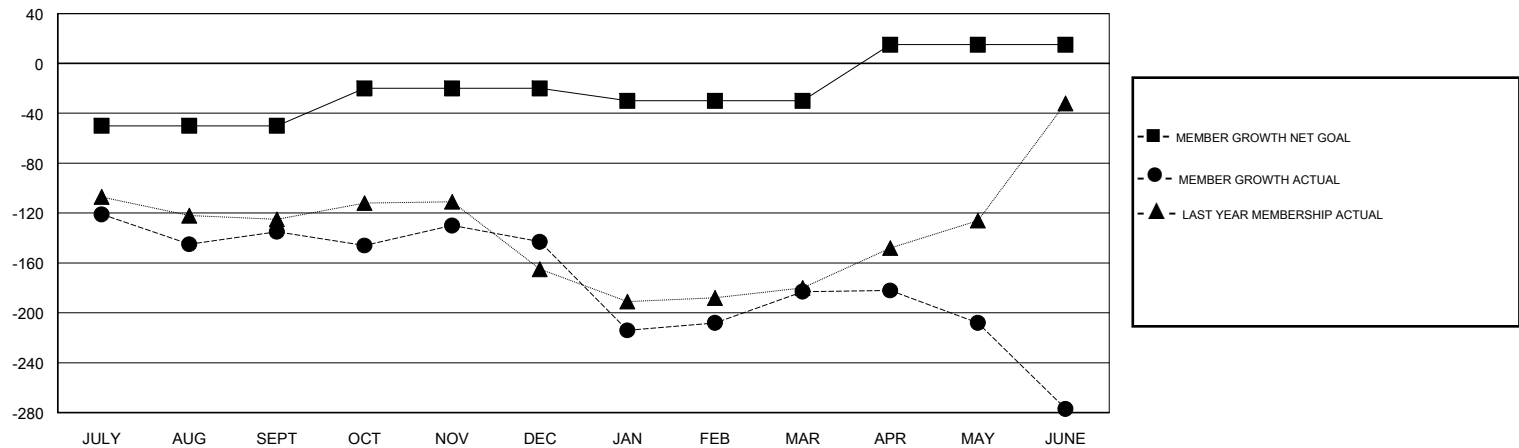
Clubs			
RESULTS FOR 2017-2018			
QUARTER	NEW CLUB GOAL	NEW CLUBS	DROPPED CLUBS
JULY/AUG/SEPT	0	1	2
OCT/NOV/DEC	1	2	0
JAN/FEB/MAR	0	0	1
APR/MAY/JUNE	1	1	1

Members			
RESULTS FOR 2017-2018			
QUARTER	MEMBER GROWTH NET GOAL	MEMBER GROWTH ACTUAL	DROPPED MEMBERS ACTUAL (including transfers)
JULY/AUG/SEPT	-50	96	220
OCT/NOV/DEC	30	99	102
JAN/FEB/MAR	-10	97	123
APR/MAY/JUNE	45	184	266

GOALS AND ACTUAL NEW CLUBS CUMULATIVE



GOALS AND ACTUAL MEMBERS CUMULATIVE



DROPPED CLUBS: 4	61 CLUBS OF 75 ADDED 1 OR MORE NEW MEMBERS	<u>GENDER DISTRIBUTION</u>	
		MALE	1,302 (63.89%)
		FEMALE	736 (36.11%)
		Women Percentage Fiscal Year Goal: 35%	
<u>DROPPED MEMBERS</u>		TOTAL FAMILY UNIT MEMBERS	0
DECEASED	26	FAMILY MEMBERS PAYING HALF DUES	0
CLUB CANCELLED	12		
OTHER	671		
TOTAL	709		

[CLICK HERE FOR CUMULATIVE MEMBERSHIP DATA](#)